



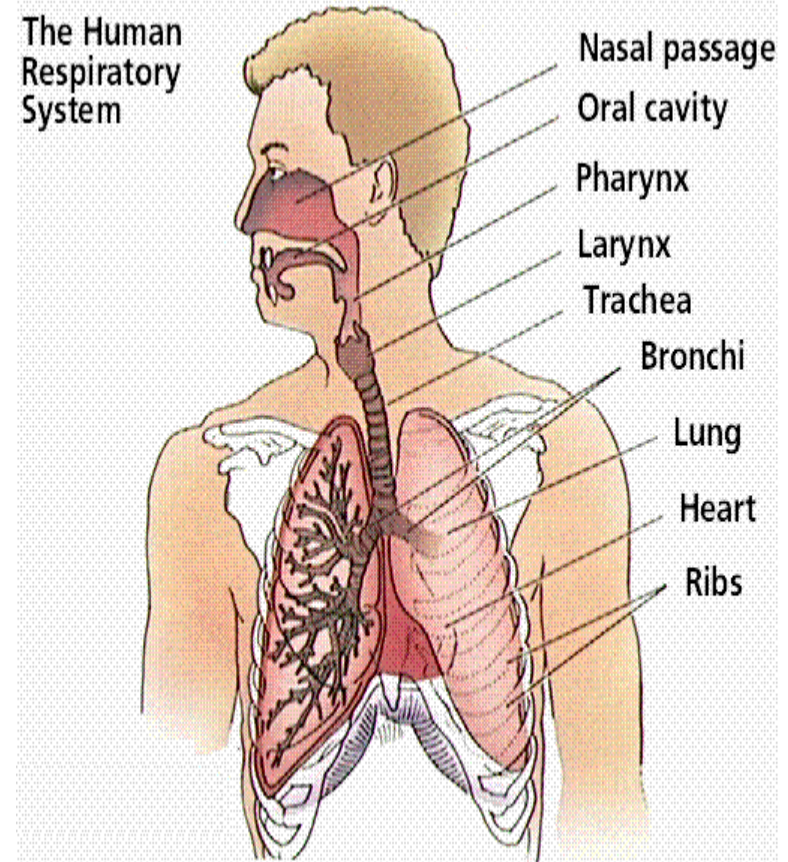
# The Nasal Cavity

---

Prof. Dr. Mohammed Hisham  
Al-Muhtaseb

# The Nasal Cavity

- The first part of the respiratory tract
- **Functions of the respiratory system:**
  1. Provides for gas exchange
  2. Regulates blood pH
  3. Filters the inspired air
  4. Contains receptors for smell, and produce vocal sounds (phonation)
  5. Excretes small amounts of water and heat





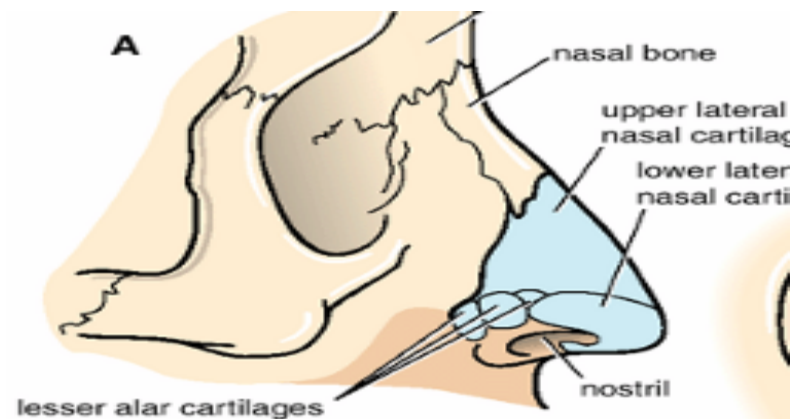
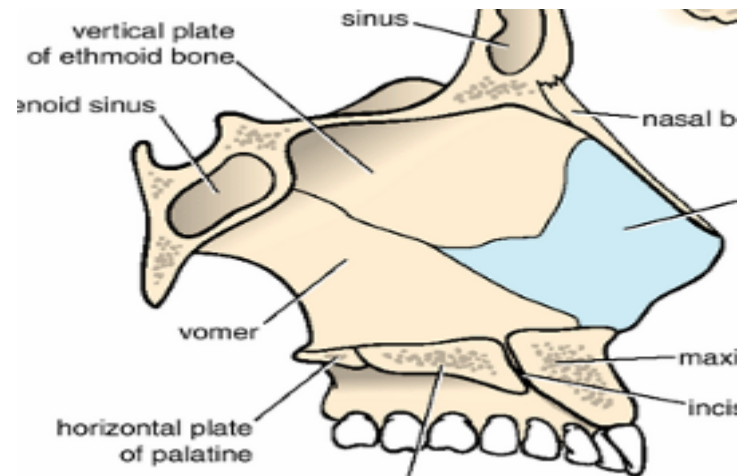
# Nose

---

- Devided into :
- External nose
- Nasal Cavity

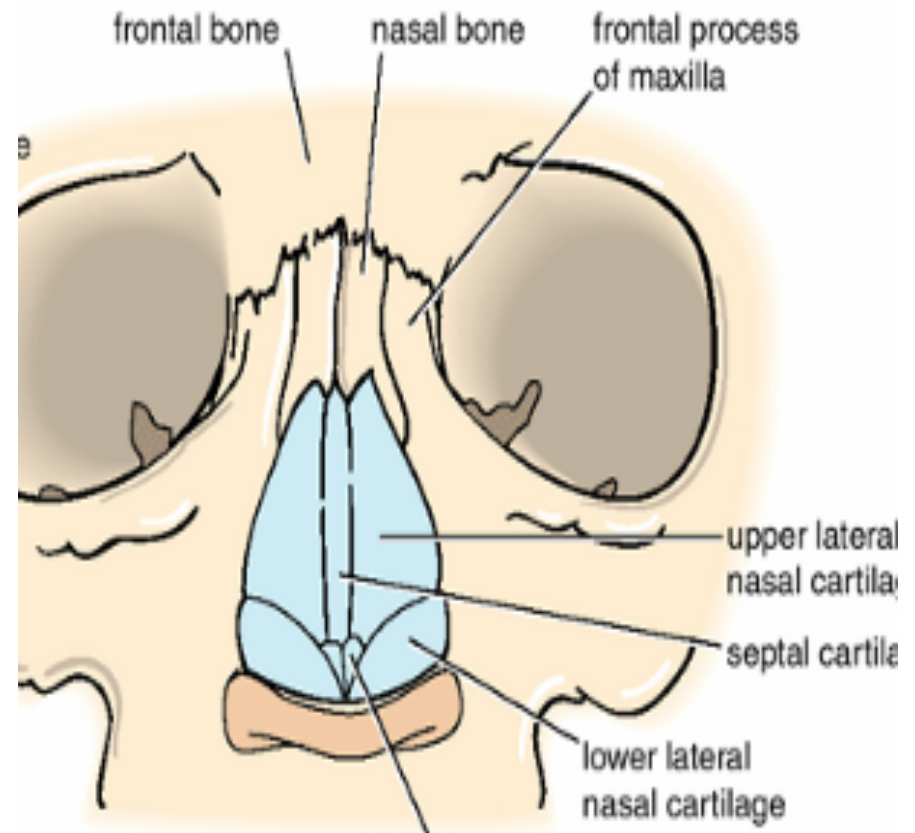
# External nose

- Cartilaginous framework:
- **1. Septal cartilage**
- **2. Lateral nasal cartilage**
- **3. Alar cartilage**
- All are plates of **hyaline cartilage**



# External nose

- Bony framework
  1. The **nasal bones**
  2. Frontal processes of **the maxillae**
  3. Nasal part of the **frontal bone**



# External Nose



---

- ***Blood Supply***

- Branches of the **ophthalmic and the maxillary arteries**
- *ala and the lower* part of the septum by branches from the **facial artery**.

- ***Nerve Supply***

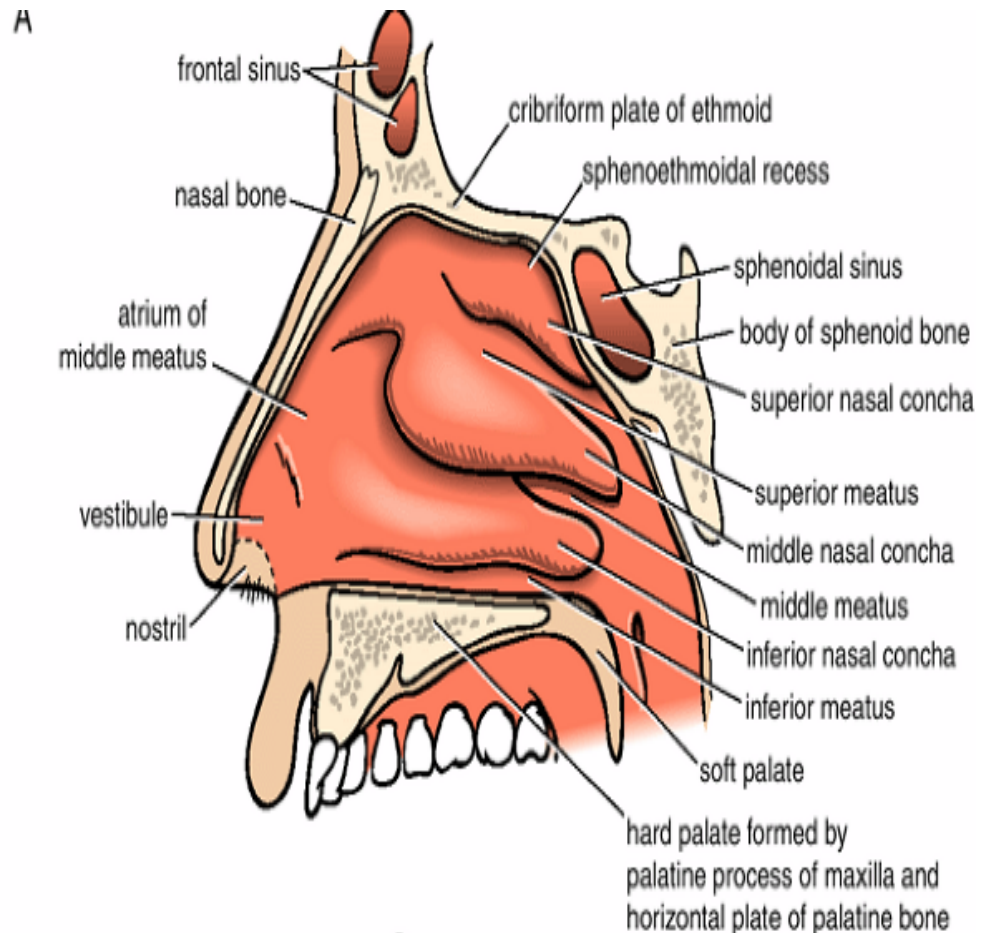
- **Infratrochlear** and **external nasal** branches of the **ophthalmic nerve**
- infraorbital branch of the **maxillary nerve**

# Nasal Cavity



# Nasal Cavity

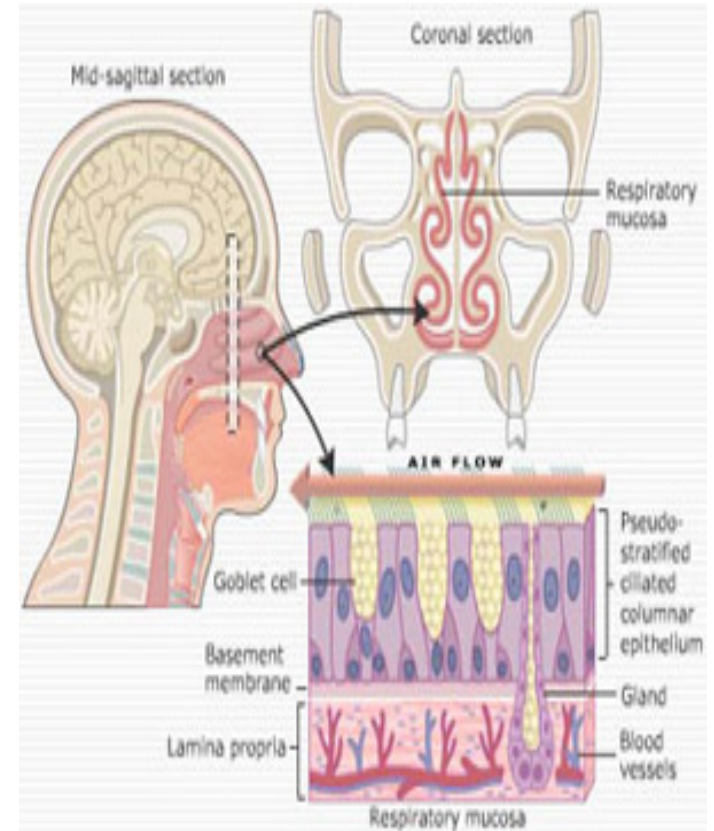
- Extends from the nostrils in front to the posterior nasal apertures (**choana**)
- Opens into the nasopharynx
- **Vestibule** is the area of the nasal cavity lying just inside the nostril
- Divided into right and left halves by the **nasal septum**
- **Septum** is made up of the **septal cartilage**, the vertical plate of the **ethmoid**, and the **vomer**.





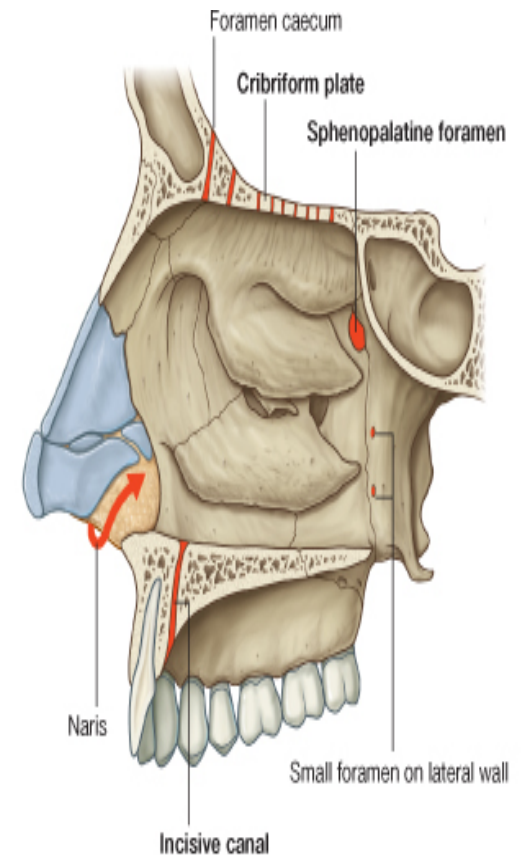
# Nasal Cavity

- Functions :
- 1. **Respiratory**
- 2. **Olfactory**
- 3. **Resonance of voice**
- 4. **drains lacrimal fluid**
- 5. **Protective :**
  - Sneezing
  - Filtration
  - Proteolytic enzymes
  - Warming and moistening the air



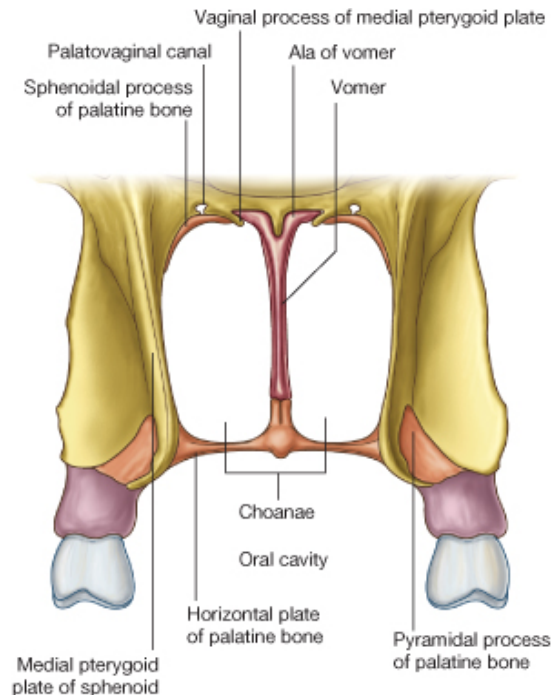
# Nares

- The anterior openings of the nasal cavities
- Held open by the surrounding alar cartilages and septal cartilage
- Nares are continuously open
- Can be widened further by the action of the related muscles of facial expression



# Choanae

- Openings between the nasal cavities and the nasopharynx
- Rigid openings completely surrounded by bone





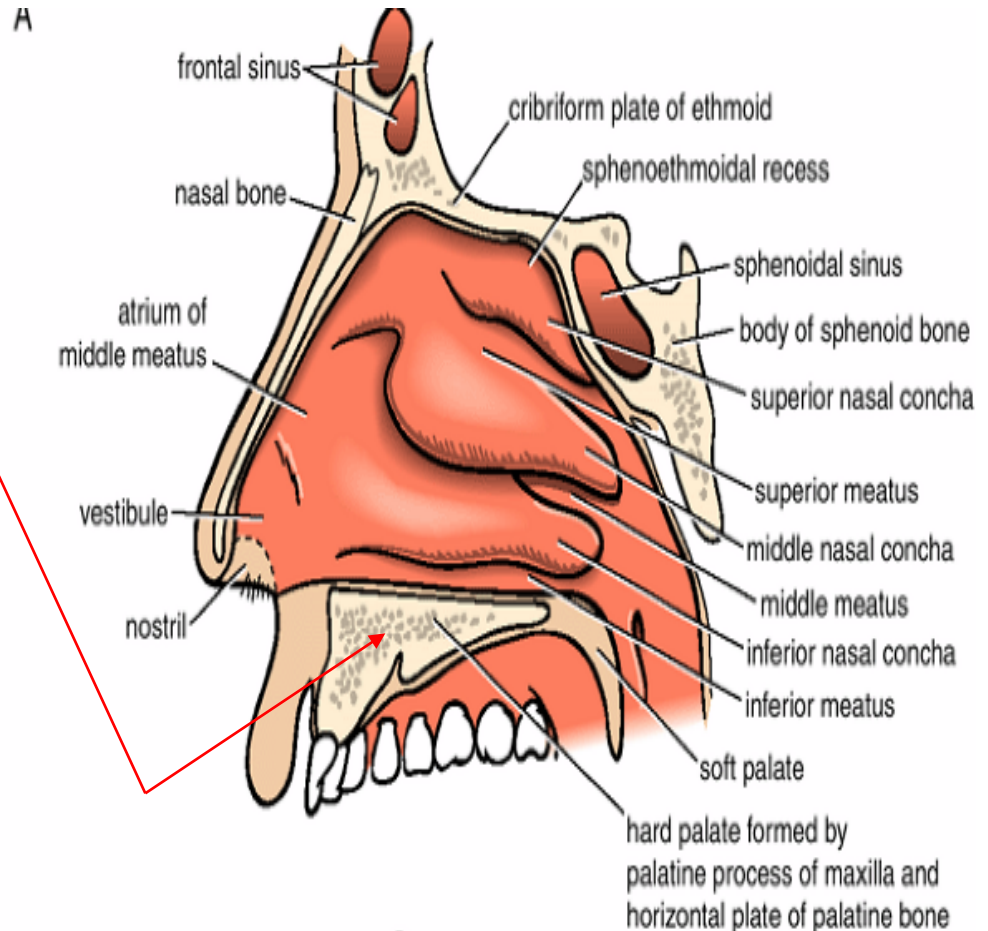
# Nasal Cavity

---

- Boundaries of the cavity :
  - **Floor**
  - **Roof**
  - **lateral wall**
  - **Medial or septal wall.**

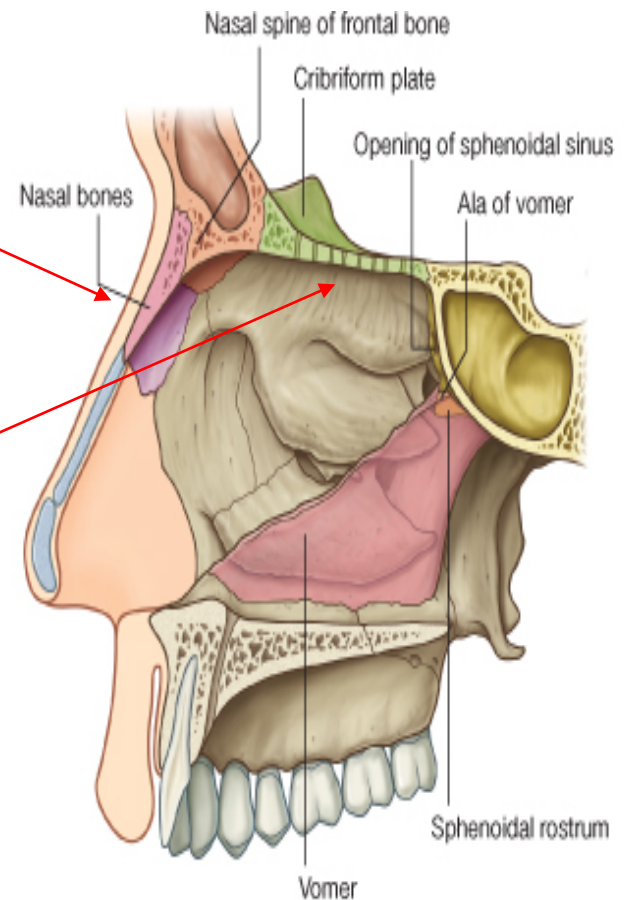
# Floor

- **The upper surface of the hard palate**
- which consist of:
  - 1. Palatine process of the **maxilla**
  - 2. Horizontal plate of the **palatine bone**



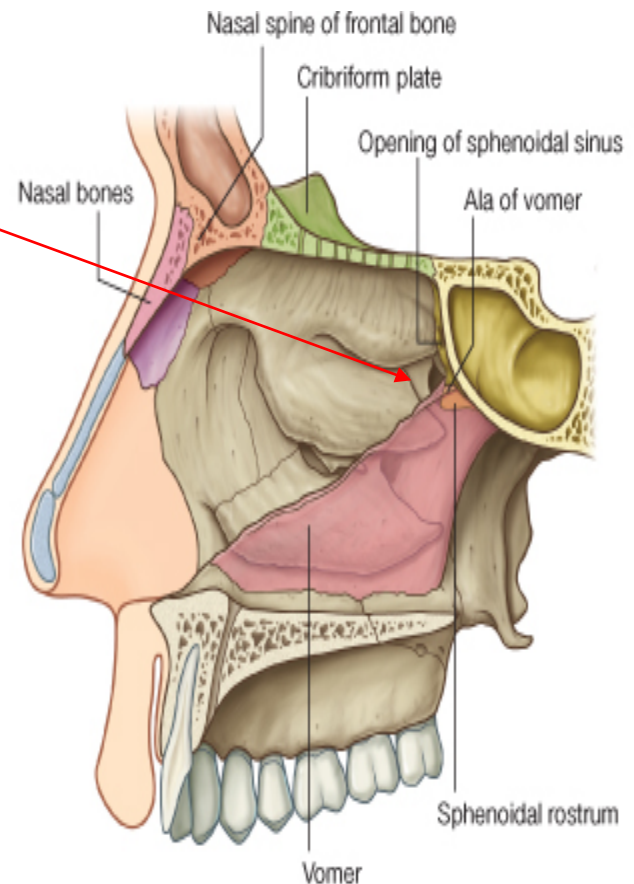
# Roof

- **1. Sloping anterior part:**
- Nasal spine of the frontal bone and the nasal bones
- **2. Horizontal middle part:**
- The cribriform plate of the ethmoid bone



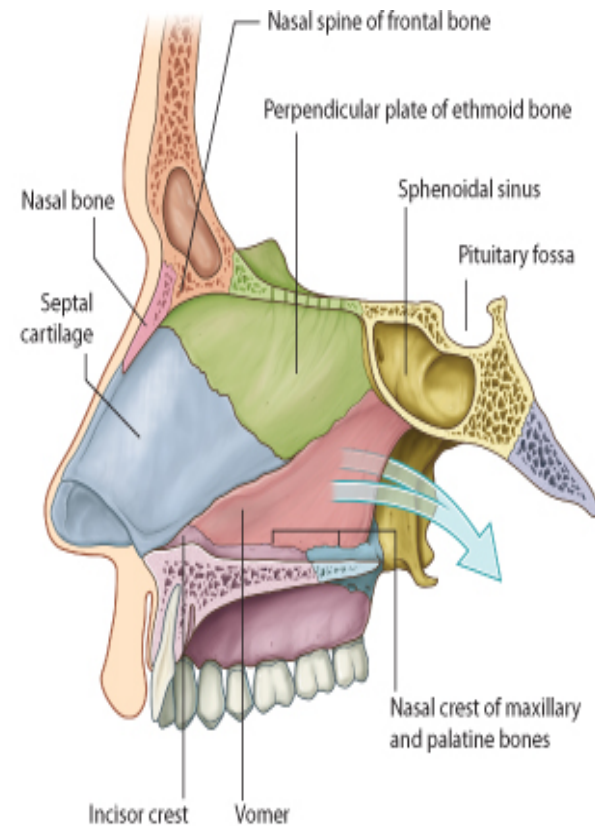
# Roof

- 3. Sloping posterior part:
- Anterior surface of the **sphenoid bone (body)**
- Ala of the **vomer**
- **Vaginal process** of the palatine bone



# Medial wall

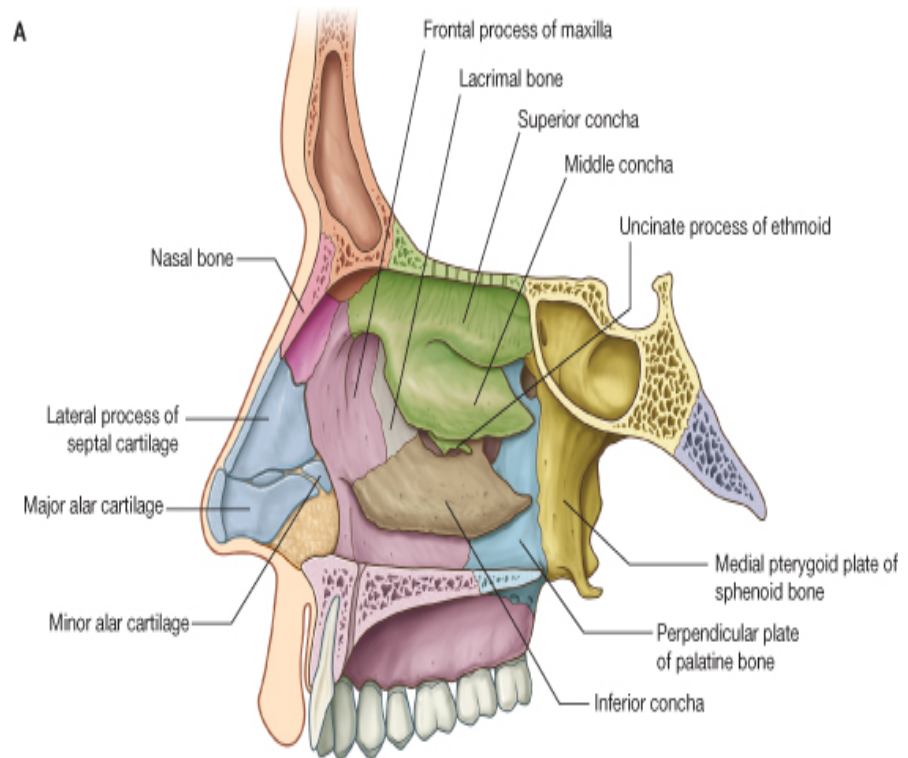
- **Septal nasal cartilage** anteriorly
- **Posteriorly vomer** and the **perpendicular plate of ethmoid bone**





# Lateral Wall

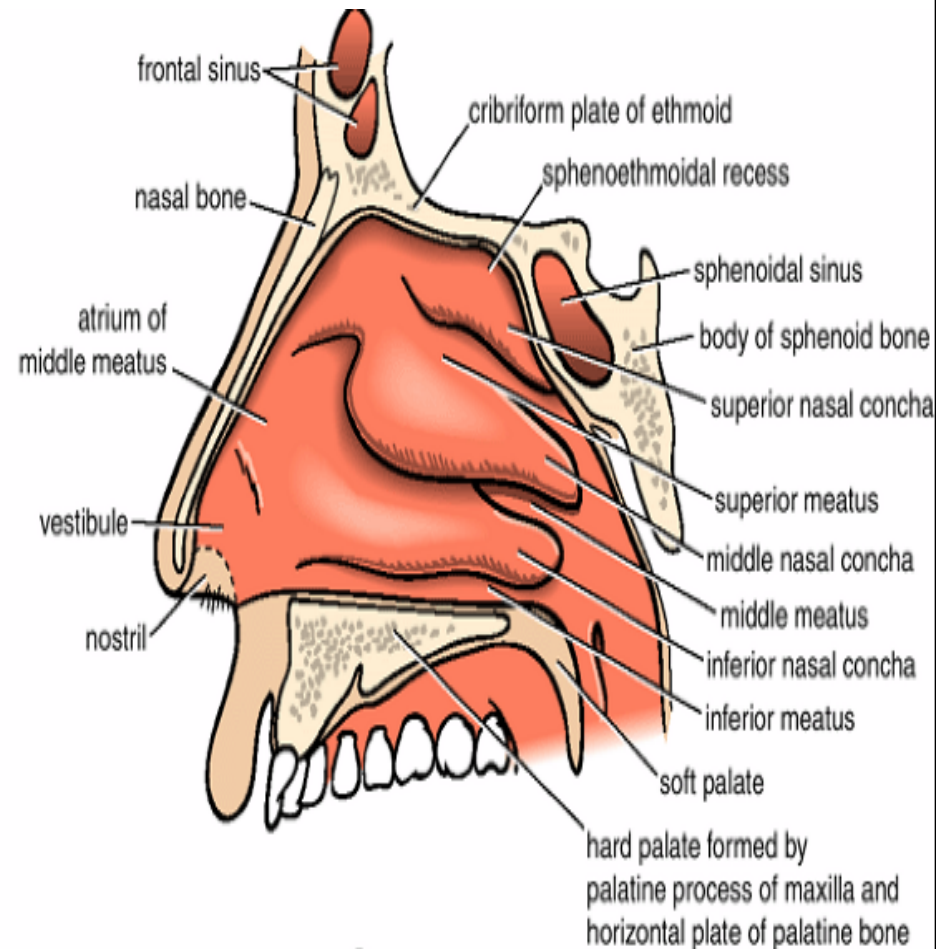
- Complex and formed by bone, cartilage, and soft tissues
- **Bony support :**
- **Ethmoidal labyrinth and uncinete process**
- Perpendicular plate of the **palatine bone**
- Medial plate of the **pterygoid process**
- Medial surfaces of the **lacrimal bones and maxillae**
- **Inferior concha**



# Lateral Wall

- Parts:
- **1. Vestibule** is the area of the nasal cavity lying just inside the nostril
- Covered with skin and contains thick hairs (**vibrissae**)
- **2. Antrum (atrium)**
- 3. Posterior part contain **3 conchae, 3 meatuses, and one recess.**

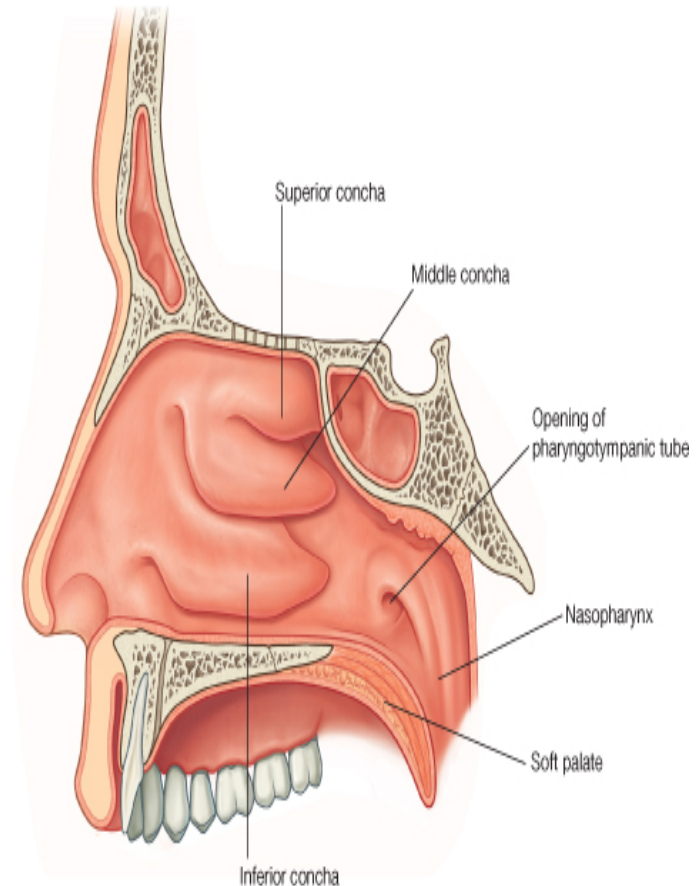
A



# Mucosa

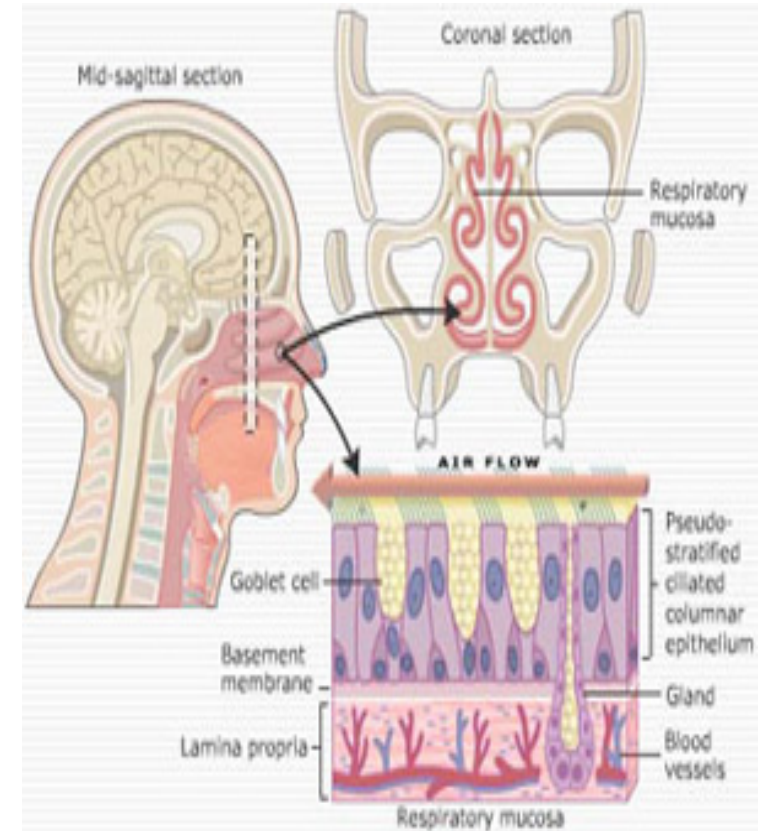
- lined with respiratory mucous membrane
- Except :
  1. **The vestibule** is lined with modified skin and has coarse hairs
  2. **Above the superior concha** is lined with **olfactory** mucous membrane and contains **nerve endings**

B



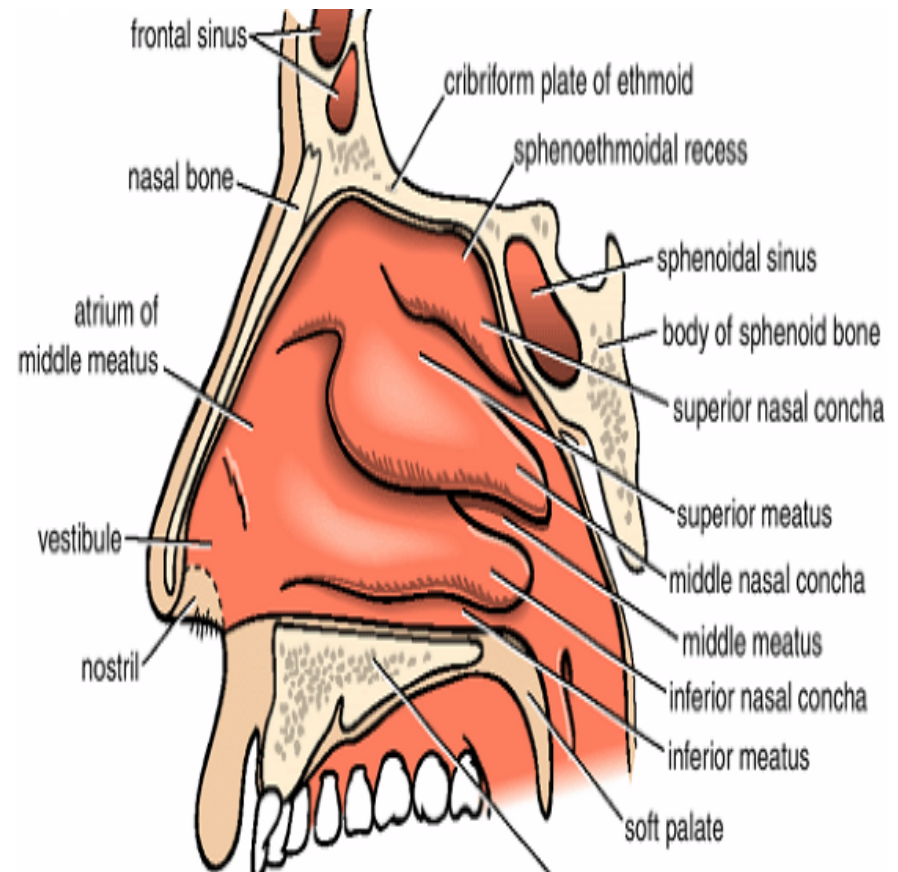
# Function of Mucous Membrane

- large plexus of veins in the submucous connective tissue is present in the respiratory region.
- Warm blood in the venous plexuses serves to heat up the inspired air as it enters the respiratory system
- Mucous traps foreign particles and organisms in the inspired air



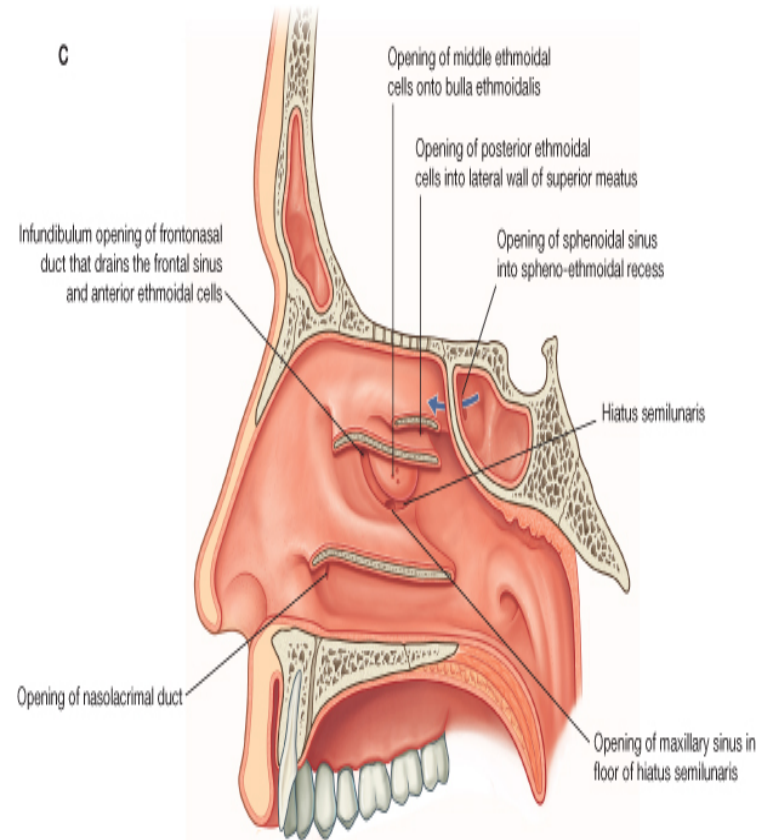
# Choncae

- All Choncae extend medially across the nasal cavity, separating it into four air channels:
- **Inferior, Middle, and Superior meatus**, and a **Spheno-ethmoidal recess**
- Anterior end of each concha curves inferiorly to form a lip that overlies the end of the related meatus



# Conchae

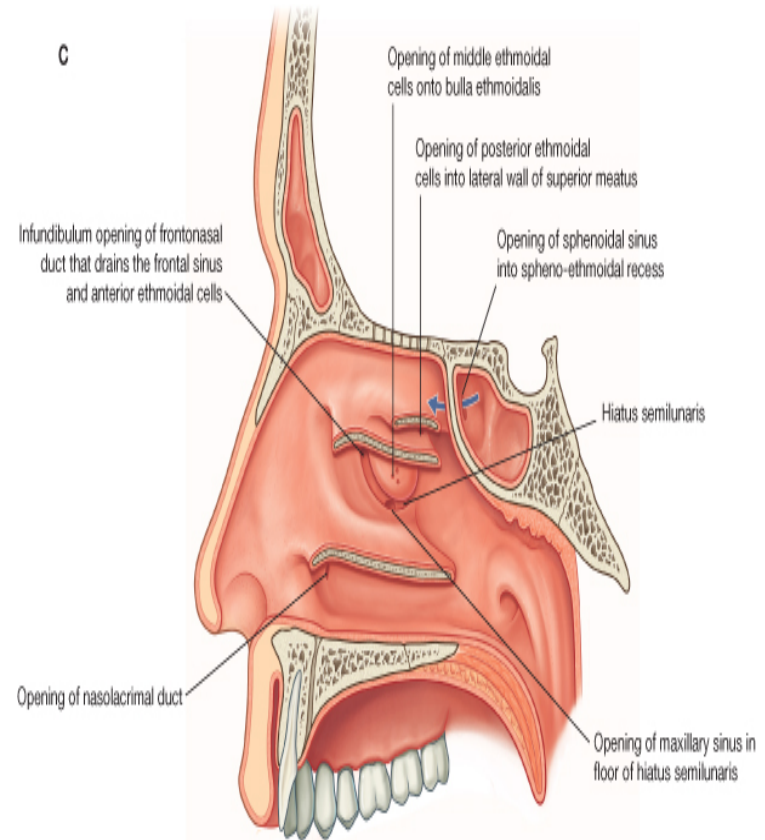
- lateral wall of the middle meatus elevates to form the dome-shaped **Ethmoidal bulla**
- Formed by the underlying middle ethmoidal cells, which expand the medial wall of the ethmoidal labyrinth.
- Inferior to the ethmoidal bulla is a curved gutter (the **Hiatus semilunaris**),
- Formed by the mucosa covering the lateral wall
- Defect in the bony wall between the ethmoidal bulla above and the uncinata process below.





# Conchae

- Anterior end of the hiatus semilunaris forms a channel (the **Ethmoidal infundibulum**),
- Curves upwards and continues as the **Frontonasal duct** through the anterior part of the ethmoidal labyrinth to open into the frontal sinus.





# Paranasal Sinuses and Their Site of Drainage Into the Nose

---

- The nasolacrimal duct and most of the paranasal sinuses open onto the lateral wall of the nasal cavity
- **1. Maxillary sinus**
  - Middle meatus through hiatus semilunaris
- **2. Frontal sinuses**
  - Middle meatus via infundibulum and frontonasal duct
- **3. Sphenoidal sinuses**
  - Sphenoethmoidal recess





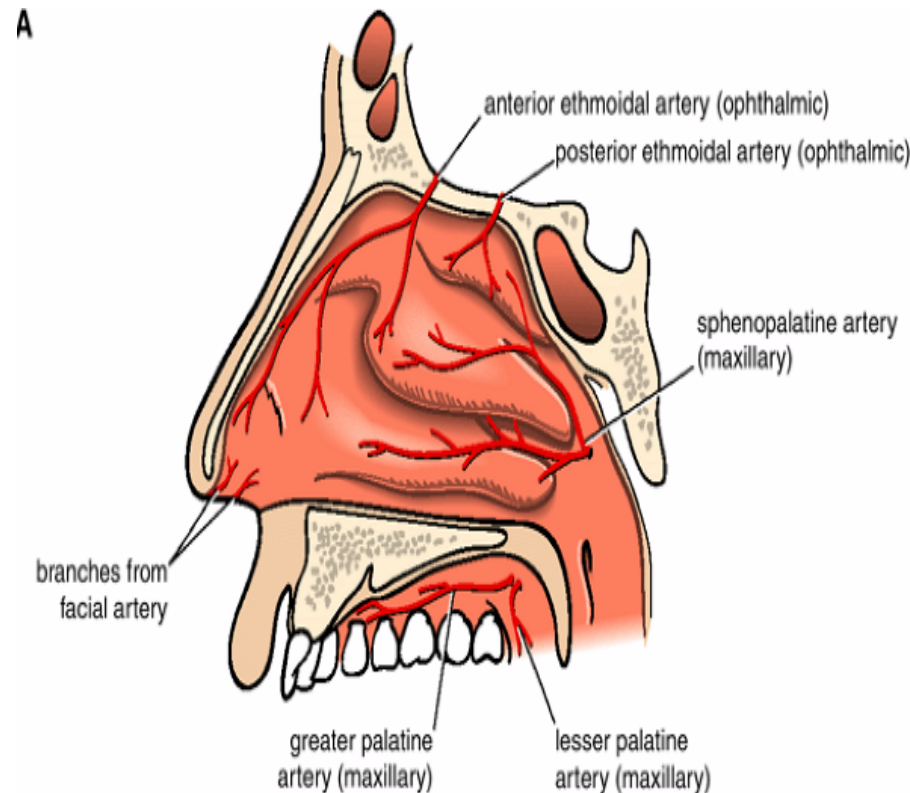
# Paranasal Sinuses and Their Site of Drainage Into the Nose

---

- **Ethmoidal sinuses**
  - 1. Anterior group
    - Infundibulum and into middle meatus
  - 2. Middle group
    - Middle meatus on or above bulla ethmoidalis
  - 3. Posterior group
    - Superior meatus
- Nasolacrimal duct opens onto the lateral wall of the inferior nasal meatus

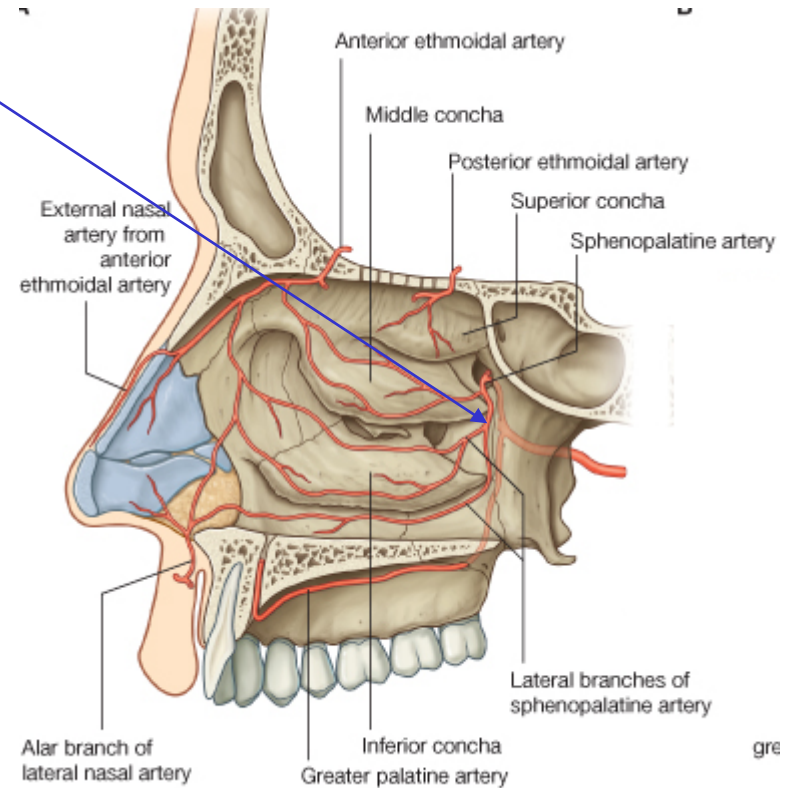
# Blood Supply

- **Sphenopalatine artery**
- largest vessel supplying the nasal cavity
- Terminal branch of the maxillary artery in the pterygopalatine fossa
- Enters the nasal cavity by passing medially through the sphenopalatine foramen



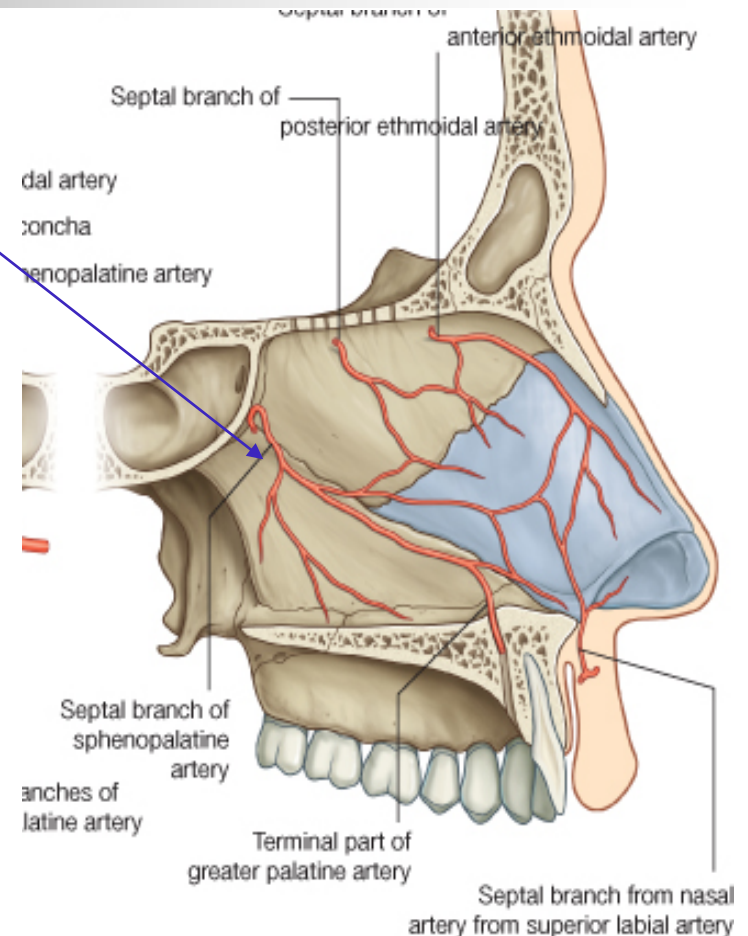
# Branches

- **1. Posterior lateral nasal branches**
- Short sphenopalatine artery
- supply a large part of the lateral wall (post.superior quadrant)



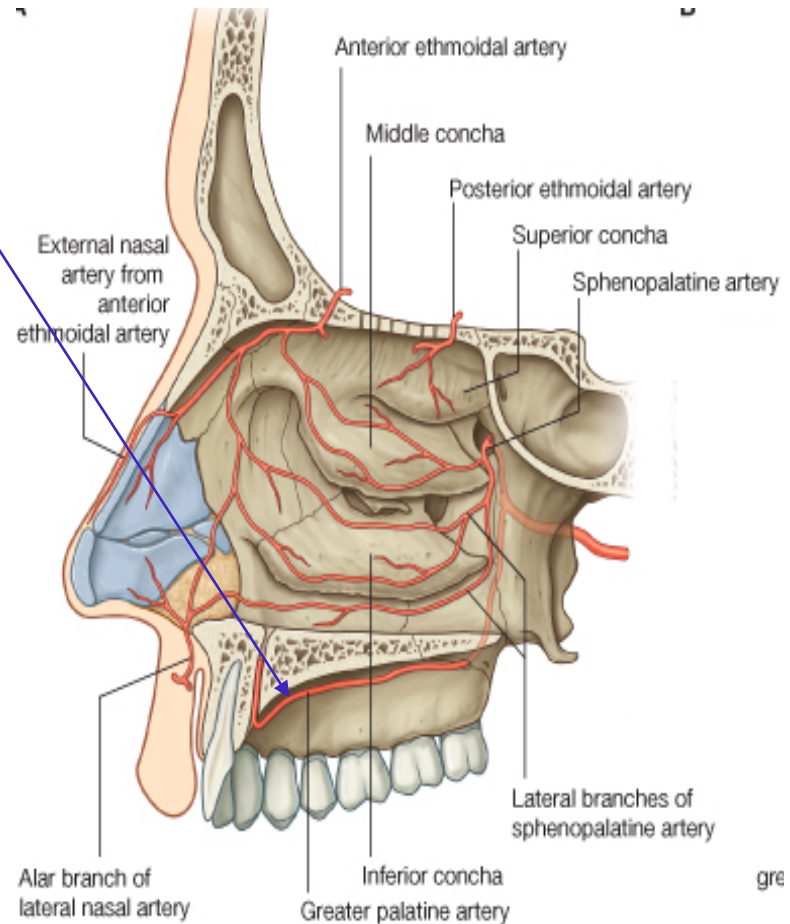
# Branches

- **2.. Posterior septal branches**
- Long sphenopalatine
- pass over the roof of the cavity and onto the nasal septum
- contribute to the blood supply of the medial wall



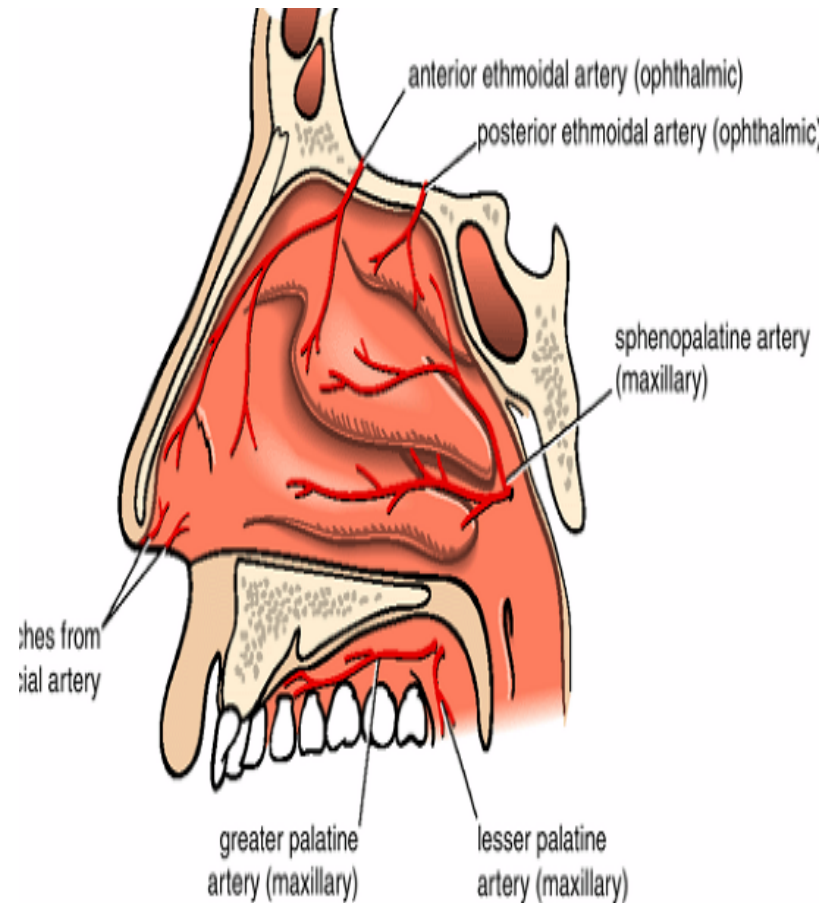
# Greater palatine artery

- **Greater palatine artery**
- Arises in the pterygopalatine fossa as a branch of the maxillary artery
- Enters the nasal cavity by passing up through the **incisive canal**
- Supplies the anterior regions of the medial wall and adjacent floor (**posterior and antero-inferior quadrant**)



# Anterior and posterior ethmoidal arteries

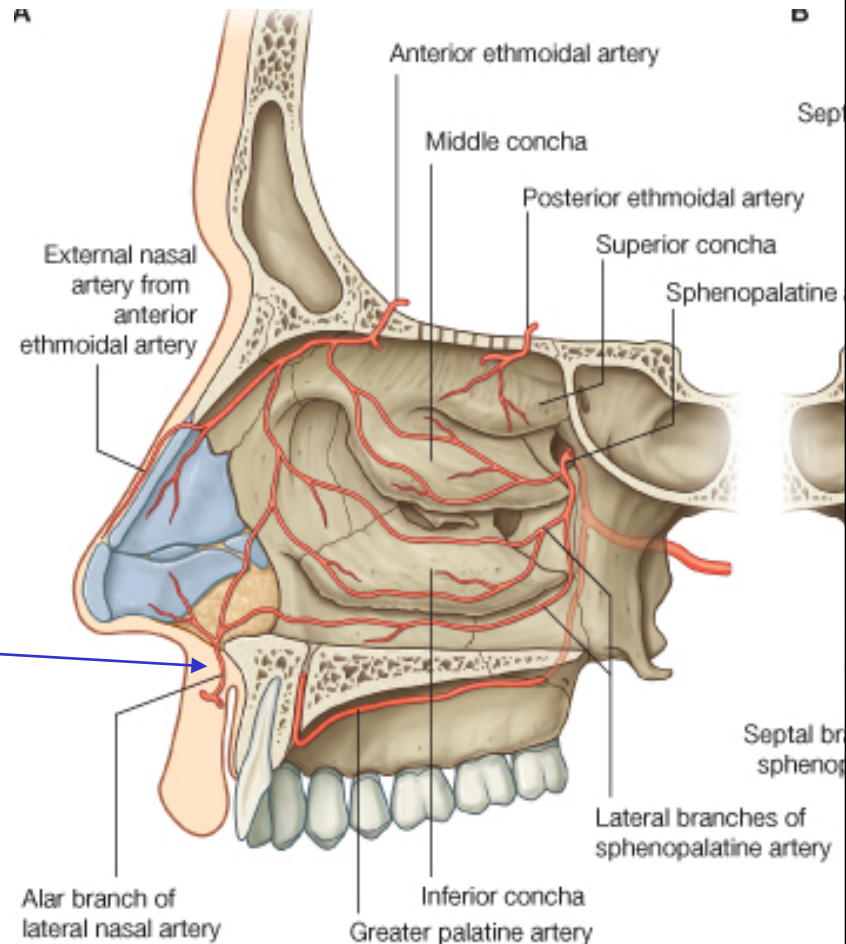
- Originate in the orbit from the ophthalmic artery
- The **anterior ethmoidal artery** accompanies the anterior ethmoidal nerve
- Descending through a slit-like foramen lateral to the crista galli
- Supply the medial (septal) and lateral wall of the nasal cavity (**anterior-superior quadrant**)
- The **posterior ethmoidal artery** descends into the nasal cavity through the **cribriform plate** and has branches to the upper parts of the medial and lateral walls.





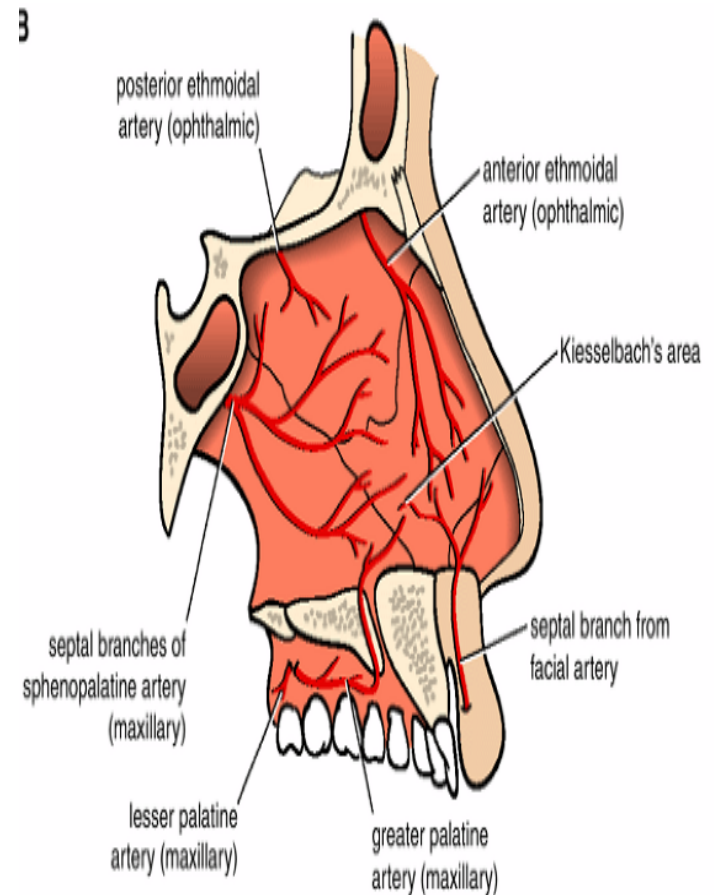
# Superior labial and lateral nasal arteries

- Originate from the facial artery on the front of the face
- **Superior labial** gives an **alar** branch supplies the region around the naris and a **septal** branch supplies anterior regions of the nasal septum.
- **lateral nasal** arteries supply blood of the external nose
- **Alar** branches pass around the lateral margin of the naris and supply the nasal vestibule.



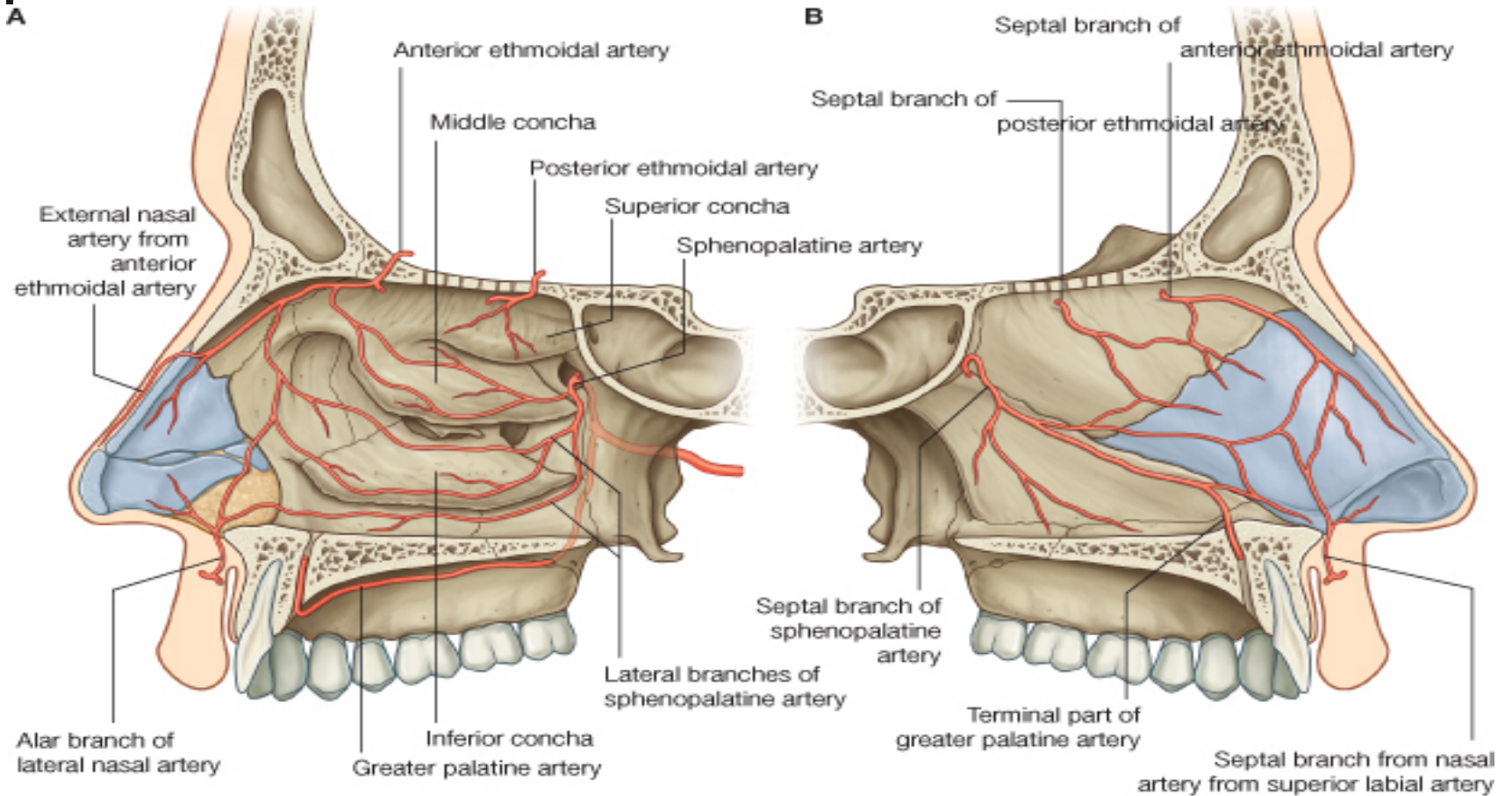
# Epistaxis

- *Vessels that supply the nasal cavities form extensive anastomoses with each other*
- *in the anterior region of the medial wall there are anastomoses relatively close to the surface*  
**(Kiesselbach's area)**
- *This area is the major site of 'nose bleeds' or epistaxis.*



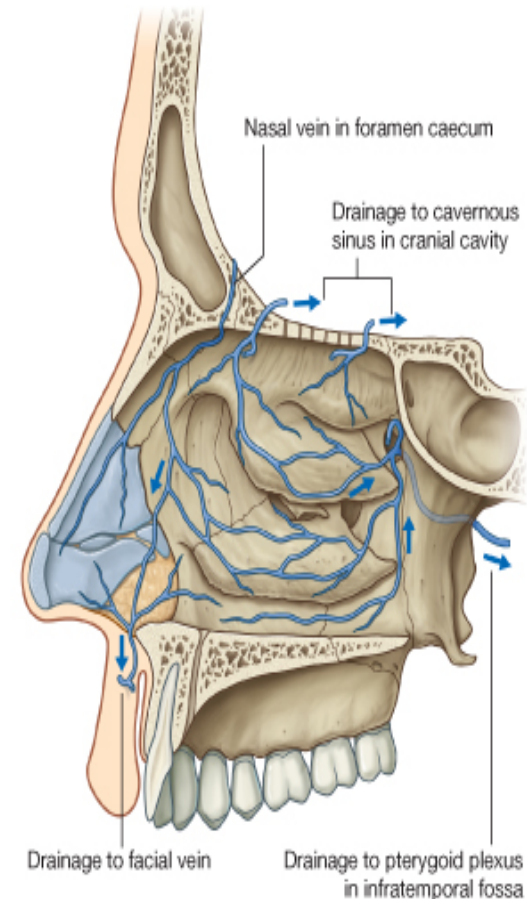


# Blood Supply



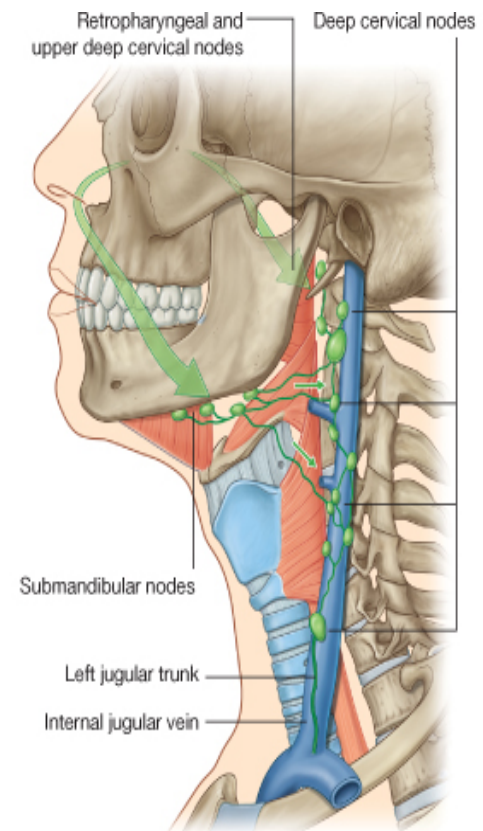
# Veins

- Veins draining the nasal cavities generally follow the arteries
- veins that pass with branches originate from the maxillary artery drain into the pterygoid plexus
- veins from anterior regions of the nasal cavities join the facial vein.



# Lymphatics

- Lymph from anterior regions drains onto the face by passing around the margins of the nares
- These lymphatics connect with the **submandibular nodes**





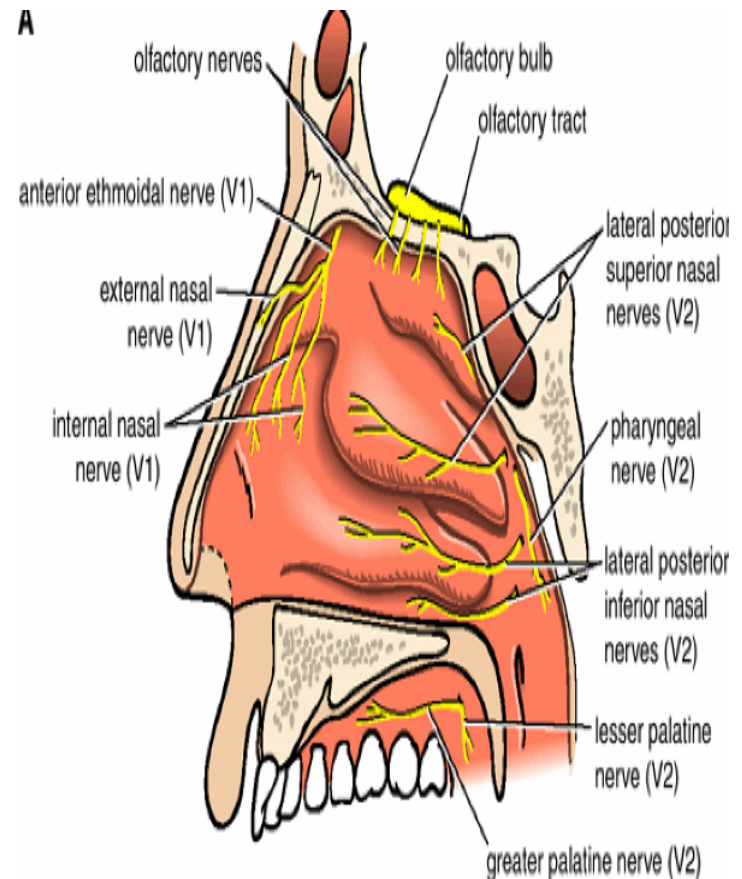
# Innervation

---

- 1. The olfactory nerve [I] for olfaction
- 2. Branches of the ophthalmic [V1] and maxillary [V2] nerves for general sensation
- 3. Parasympathetic fibers from the facial nerve [VII], Secretomotor innervations of mucous glands

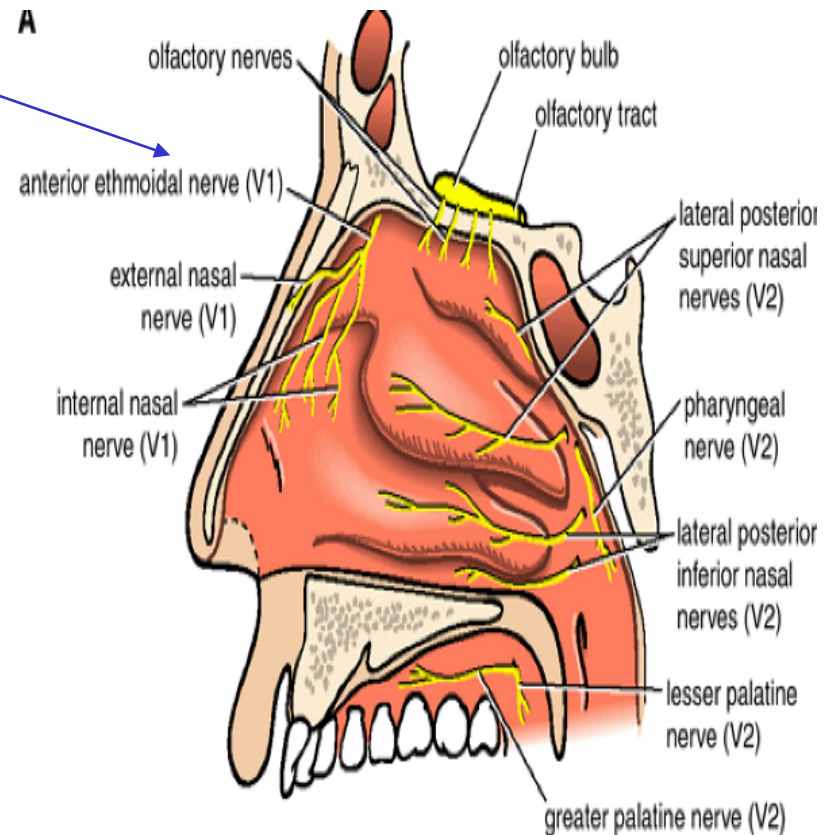
# Olfactory nerve [I]

- Composed of axons from receptors in the olfactory epithelium at the top of each nasal cavity
- Pass superiorly through the cribriform plate to synapse with the olfactory bulb of the brain.
- Branches that innervate the nasal cavity:
- **anterior and posterior ethmoidal nerves**, which originate from the nasociliary nerve in the orbit.



# Anterior and Posterior ethmoidal nerves

- The **anterior ethmoidal nerve** travels with the anterior ethmoidal artery
- It has branches to the medial and lateral wall of the nasal cavity and continues forward on the undersurface of the nasal bone
- onto the external surface of the nose by traveling between the nasal bone and lateral nasal cartilage, terminates as the **external nasal nerve**





---

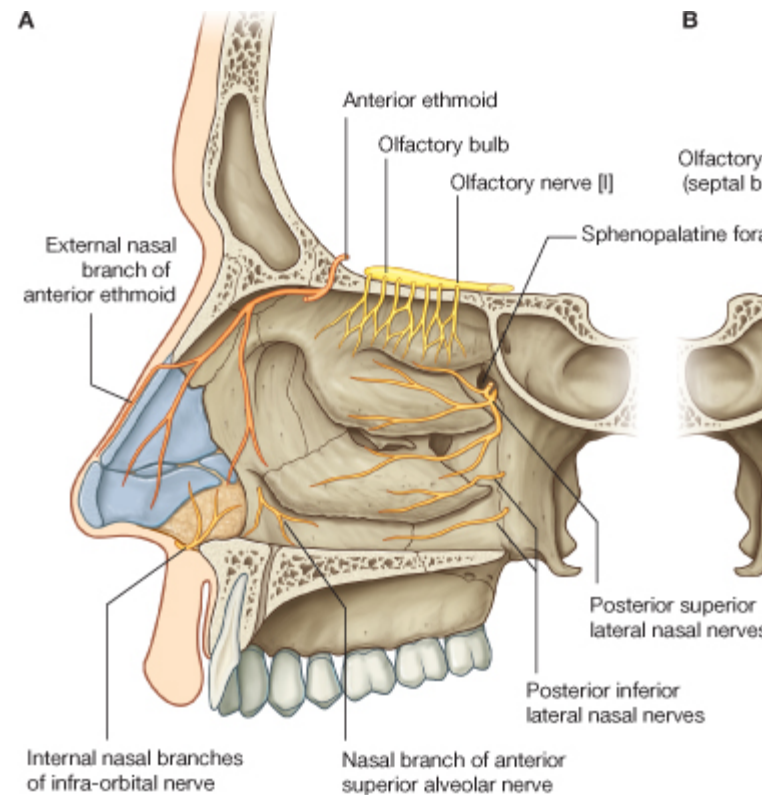
- **Posterior ethmoidal nerve**

- leaves the orbit through a similar canal in the medial wall of the orbit
  
- Terminates by supplying the mucosa of the ethmoidal cells and sphenoidal sinus
  
- Normally does not extend into the nasal cavity itself.



# Branches from the maxillary nerve [V2]

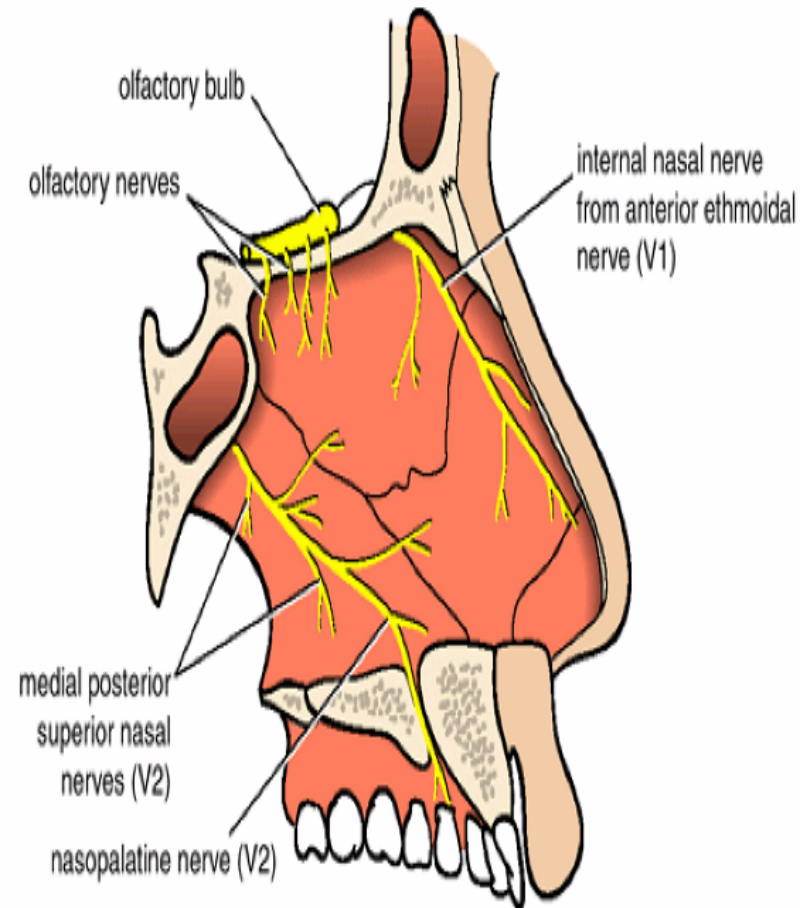
- originate in the pterygopalatine fossa just lateral to the lateral wall of the nasal cavity
- leave the fossa to enter the nasal cavity by passing medially through the **sphenopalatine foramen**
- **1. Posterior superior lateral nasal nerves** pass forward on and supply the lateral wall of the nasal cavity;
- **2. Posterior inferior nasal nerves** originate from the greater palatine nerve, innervate the lateral wall of the nasal cavity
- **3. Anterior superior alveolar** branch of the infra-orbital nerve supply the lateral wall near the anterior end of the inferior concha.





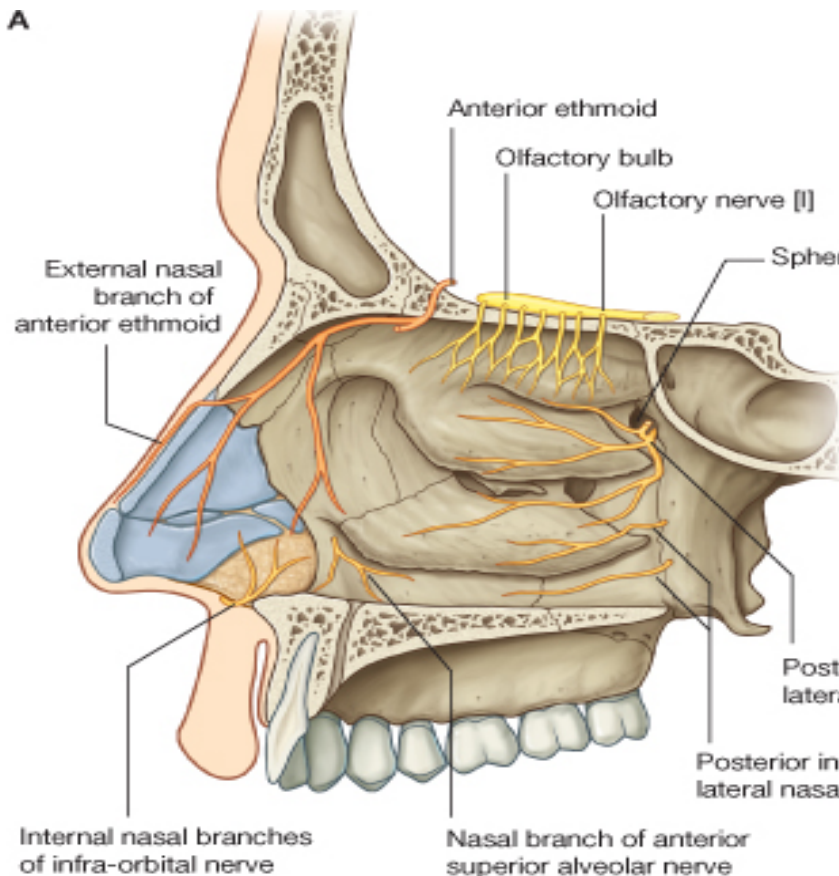
# Branches from the maxillary nerve [V2]

- 4. Largest of these nerves is the **nasopalatine nerve**, pass through the incisive canal onto the roof of the oral cavity, and terminates by supplying the oral mucosa posterior to the incisor teeth
- **5. Posterior superior medial** nasal nerves cross the roof to the nasal septum and supply both these regions

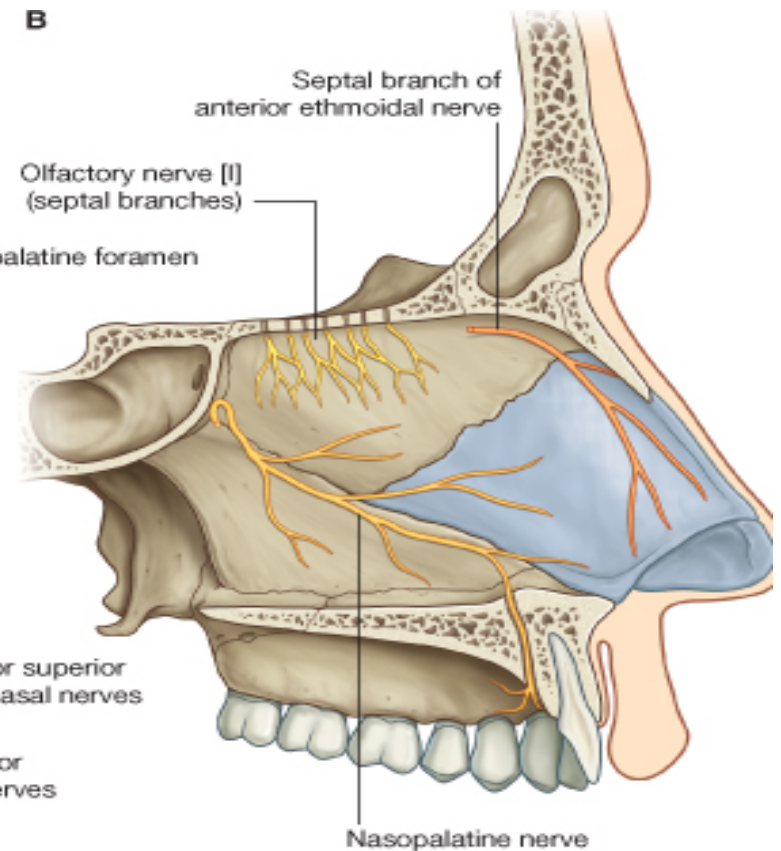


# Innervation

A



B



# Summary for blood supply and innervations



---

- **1. Postero-superior quadrant:**
  - Posterior-superior lateral nerve and vessels (short sphenopalatine)
- **2. Postero-inferior quadrant:**
  - Greater palatine nerve and vessels
- **3. Antero-superior quadrant :**
  - Ant. Ethmoidal nerve (internal and external nerve) and artery
- **4. Antero-inferior quadrant :**
  - Ant. Superior alveolar nerve and branches from the facial and greater palatine artery
- **5. Nasal septum:**
  - Lower posterior part by the long sphenopalatine nerve
  - Upper anterior part by the septal branch of the anterior ethmoidal nerve.
  - Blood supply by the long sphenopalatine artery.

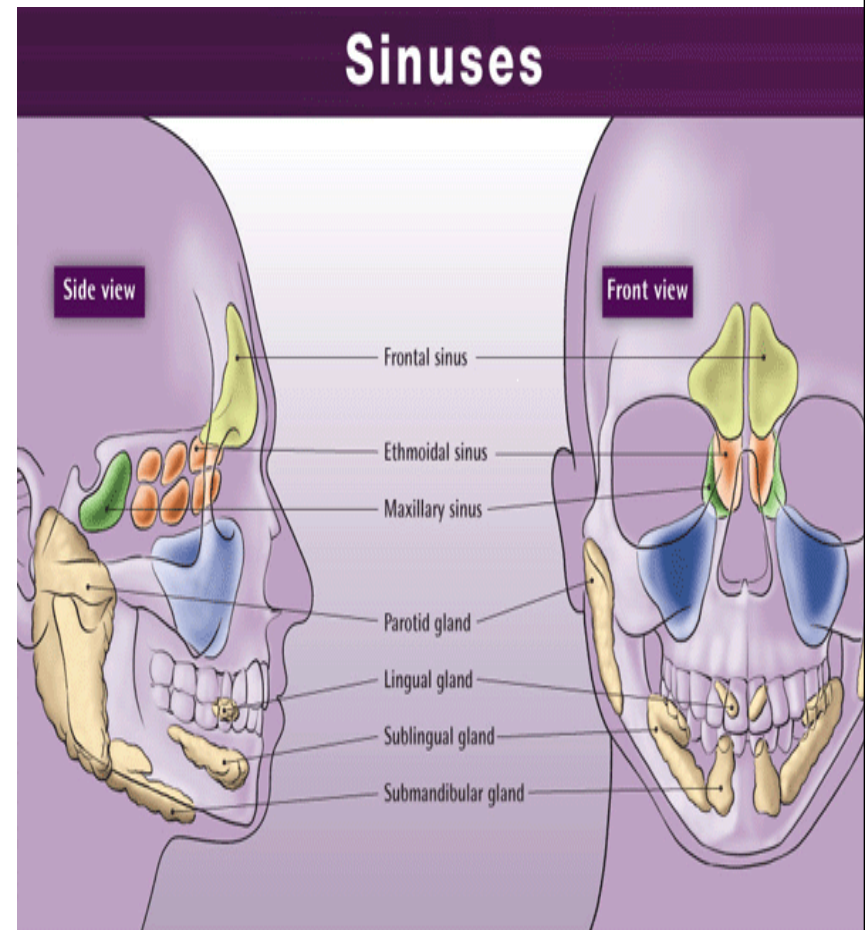


# Paranasal sinuses

---

# Paranasal sinuses

- There are four paranasal air sinuses-the **ethmoidal cells, and the sphenoidal, maxillary, and frontal sinuses**
- All are:
- lined by respiratory mucosa, which is ciliated and mucus secreting;
- open into the nasal cavities;
- innervated by branches of the trigeminal nerve [V].





# Paranasal sinuses

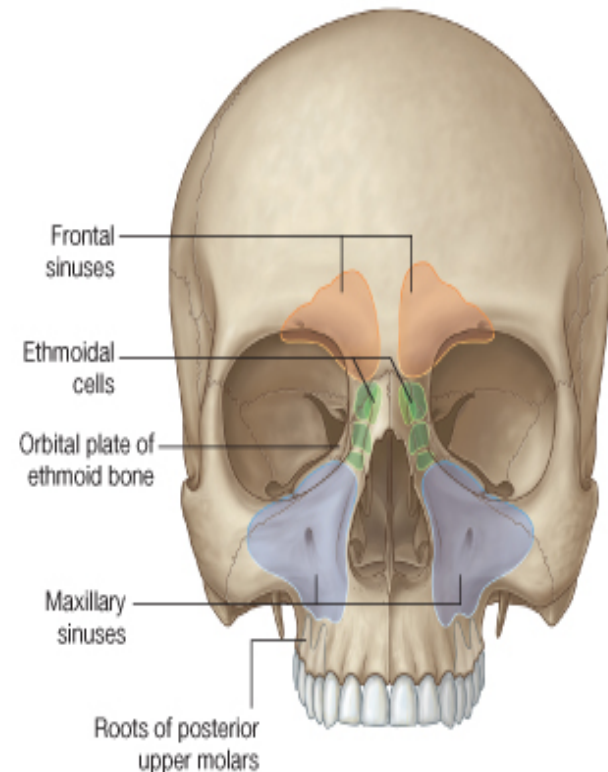
---

- Functions:
  - 1. Resonance of the voice
  - 2. Decrease the weight of the skull
  - 3. Protection

# Frontal sinuses

- One on each side, separated by a septum
- Triangular in shape and is in the part of the frontal bone under the forehead
- Drains onto the lateral wall of the middle meatus via the frontonasal duct, which continues as the ethmoidal infundibulum
- Innervated by branches of the supra-orbital nerve from the ophthalmic nerve

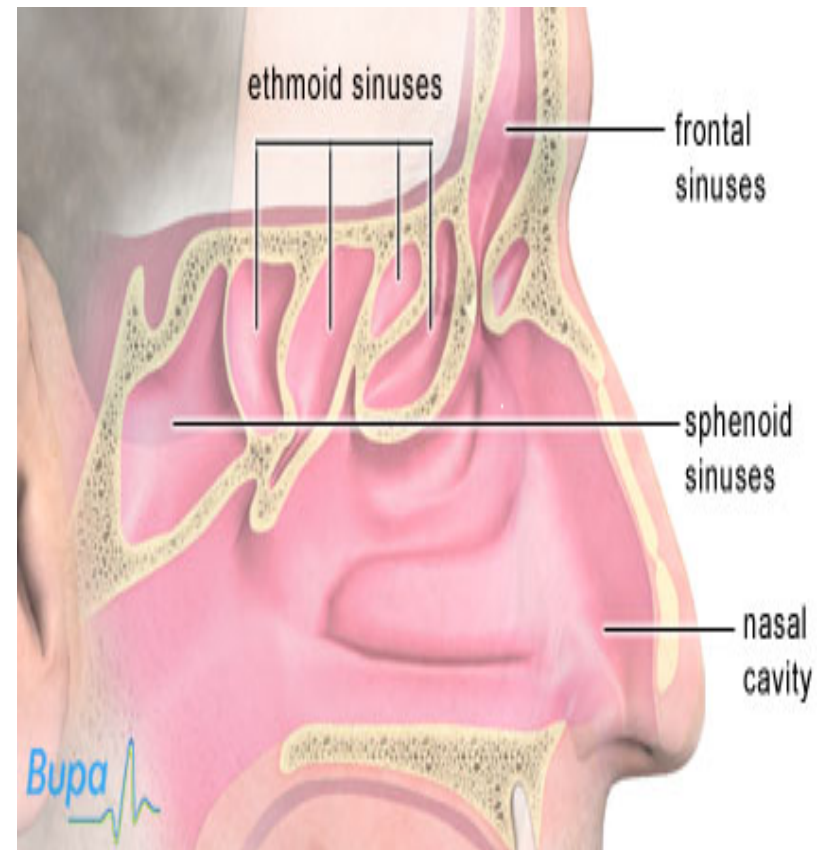
A





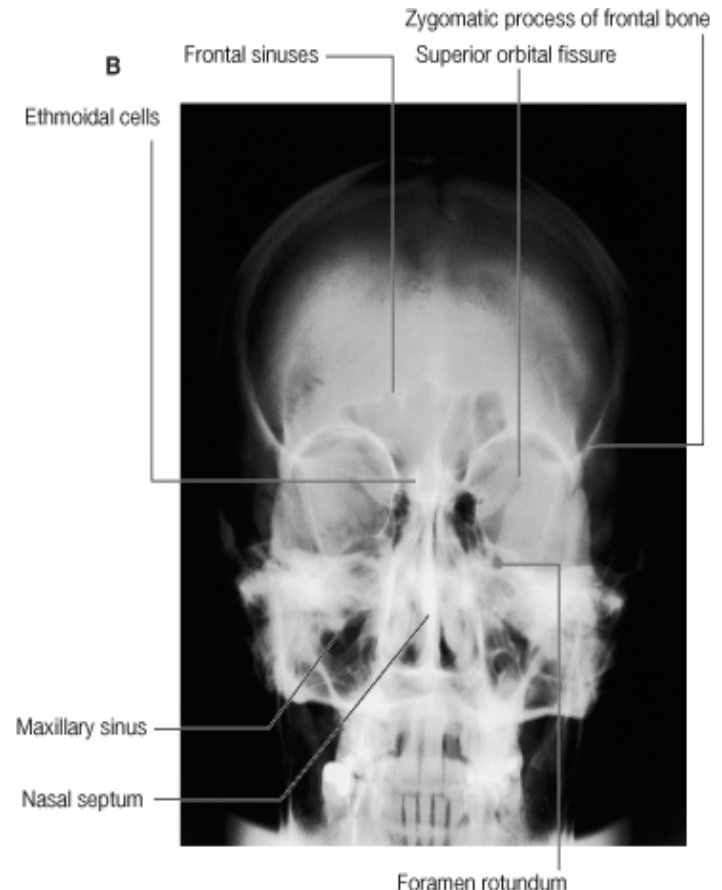
# Ethmoidal cells

- Each cluster of cells is separated from the orbit by the thin orbital plate of the ethmoidal labyrinth
- Divided into **anterior, middle, and posterior** ethmoidal cells
- The anterior ethmoidal cells open into the ethmoidal infundibulum or the frontonasal duct;
- The middle ethmoidal cells open onto the ethmoidal bulla
- The posterior ethmoidal cells open onto the lateral wall of the superior nasal meatus.
- Innervated by the **anterior** and **posterior ethmoidal branches** of the nasociliary nerve from the ophthalmic nerve



# Maxillary sinuses

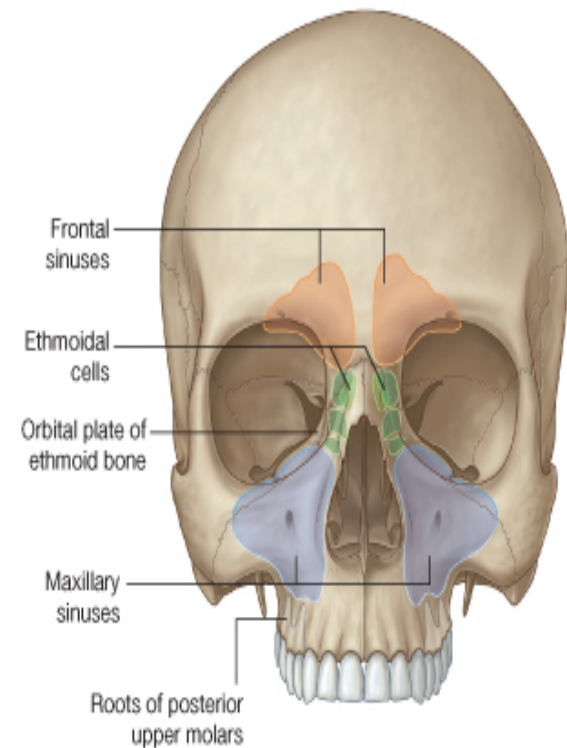
- The largest of the paranasal sinuses and completely fill the bodies of the maxillae
- Pyramidal in shape
- Apex directed laterally
- Base deep to the lateral wall of the adjacent nasal cavity
- Innervated by infra-orbital and alveolar branches of the maxillary nerve
- Drains in Middle meatus through hiatus semilunaris (Pad drainage)
- **Clinical note** : Extraction of upper teeth might lead to **fistula** formation and sinusitis



# Maxillary sinuses

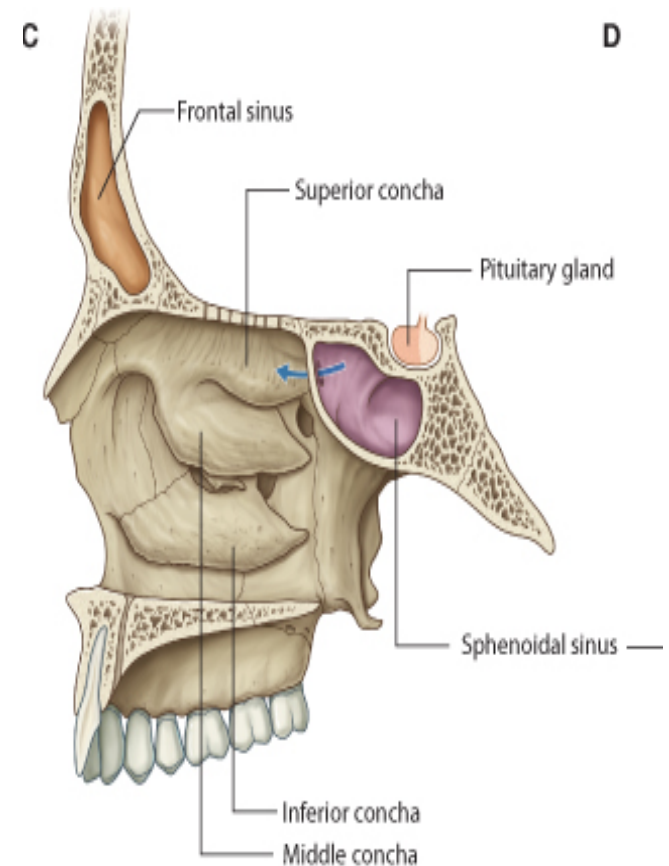
- Relationships of the maxillary sinus :
- Related above to the orbit
- Related below to the roots of the upper molar and premolar teeth
- Related behind to the infratemporal fossa
- Related medially to the lower part of the nasal cavity

A



# Sphenoidal sinuses

- Within the body of the sphenoid
- Open into the roof of the nasal cavity on the wall of the speno-ethmoidal recess
- Innervation :
  - the posterior ethmoidal branch of the ophthalmic nerve [V1];
  - the maxillary nerve [V2] via orbital branches
- Relations:
  - Above to the pituitary gland and to the optic chiasm (the pituitary gland can be surgically approached )
  - Laterally to the cavernous sinuses;
  - Below and in front, to the nasal cavities.





Thank you

---